

LAS VEGAS INTERAGENCY COMMUNICATIONS CENTER

2020 Year End Report



COMMUNICATIONS CENTER

"BUILDING BETTER PARTNERSHIPS THROUGH BETTER COMMUNICATIONS"

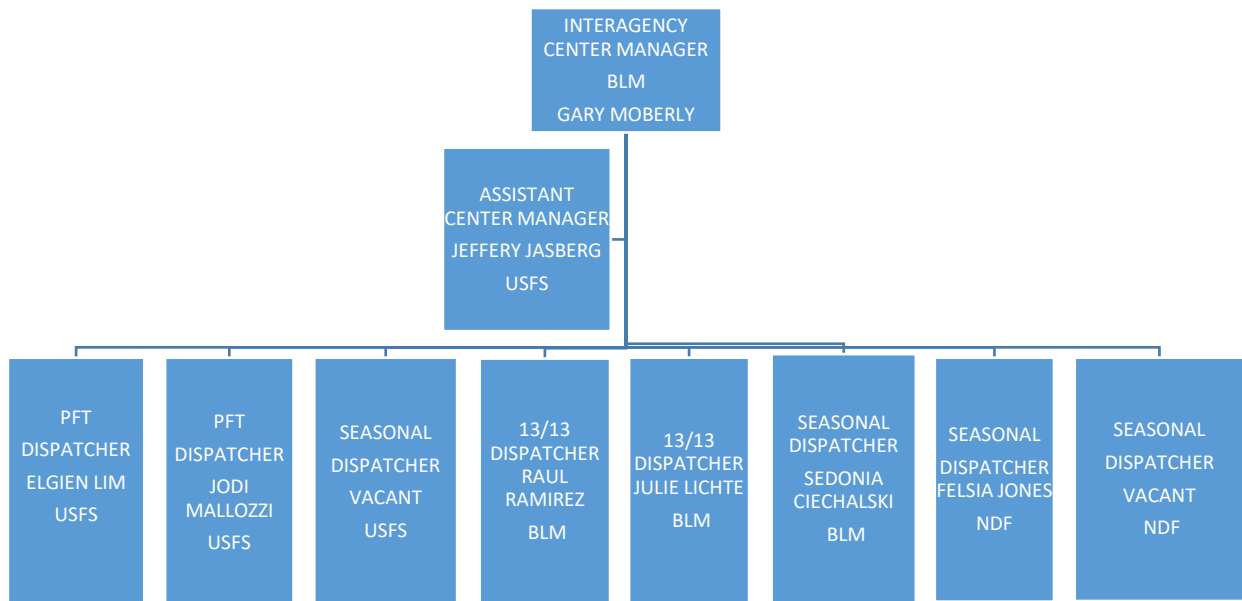
The Las Vegas Interagency Communications Center (LVICC) experienced a record high fire season for initial attack fires and an above average number of acres burned within the zone. However, the USFS showed a record five year high for acres burned contributed mainly by the lack of seasonal moisture. The year began with little to no rain during the season reaching 165 consecutive days without measurable rain. This trend continued through the remainder of the fire season reaching 207 days without measurable precipitation. Mid December brought this unprecedented streak to an end totaling 240 days, shattering a record of 150 days that had stood since 1959. While January and February were not great months for snow, the late winter-early spring storms did help. On March 1, the totals were at about 50 percent of median, but by April 1 the pack was up to 70 percent of median. Compared to big boom years with 170 percent of median snowpack.

The fire season was much more active this year with high initial attack fires and multiple extended attack fires. With an increase in public recreation and extremely dry fuels within the zone, the SMNRA and BLM had the highest total acres burned since the past five years. Rapid fire growth in the higher elevations was a significant factor this year for the SMNRA. With only 2.76 inches of total rain, this year compared to 7.26 inches this time last year. Large fire growth was inevitable. Additionally, the BLM saw a major increase in Initial Attack activity in the lower elevations mainly in part due to the lack of seasonal monsoons and drought conditions.

The total number of wildfires in the Las Vegas zone was 284, a five year high; reports show that 95% were human caused. Furthermore, the SMNRA reported 34 abandoned campfires and 192 illegal campfires.

To assist with national demands LVICC began mobilizing resources in early January in support of the Wildfires in Australia. Though extremely busy locally filling 2,162 resource orders in support of local incidents. The dispatch center mobilized equipment, crews, overhead, and aircraft totaling 427 resource orders. Agencies within the zone supported incidents in Alaska, Rocky Mountains, Great Basin, Pacific Northwest, Southern Area, Southwest, and Southern California geographic areas.

LVICC Organization Chart



Accomplishment and Highlights

- Qualified 5 dispatchers as IADP
- Qualified 2 dispatchers as ACDP
- Trained 4 new dispatchers, transitioning them to Qualified EDRC.
- Implemented the overnight check-in/check-out process for all units, to have better accountability of employees and volunteers staying out in the field overnight for projects.
- Purchased 4 portable radio consoles for COOP plan and after hours calls.
- Record use of Mesquite SEAT base
- Heavy work load at the aircraft desk with the full array of firefighting aircraft.
- Supported (2) Type 2 team and 1 Type 3 fire that warranted expanded being used.
- Opened expanded for 42 days.
- Supported BLM/ NPS repeater missions for service and repairs
- New dry erase/magnetic wall map used for mapping Incidents and helping with Situational Awareness.
- LVICC provided 24 hour service for 75 consecutive days
- FS hired one 26/0 dispatcher during 2019 Spring Hire (Elgien Lim)
- BLM hired two 13/13 dispatchers (Raul Ramirez) (Julie Lichte)
- No longer using LMICC as our afterhours call service, transferring calls directly to the on-call dispatcher that helps streamlines fire responses.

5 Year Average Fires

The following graph depicts the total number of fires from 2016-2020. All agencies experienced a significant jump in activity from the previous season. However, the BLM seen the largest increase from 32 fires in 2019 to 179 in 2020 this is a 418% increase in number of fires. This past season the Las Vegas Zone seen a 256% increase in the total number of fires from the previous year with majority human caused.

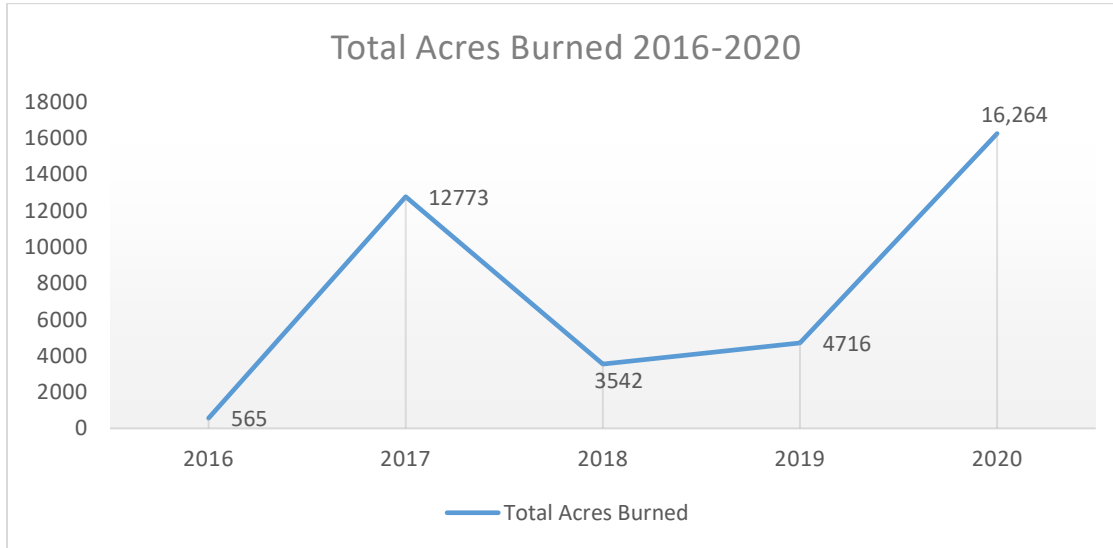


Agency Total Number of Wildfires

| YEAR | USFS | BLM | NPS | USFWS | CCFD/ASSIST | NDF | DOD/NTE | TOTALS |
|-----------------|------|-----|-----|-------|-------------|-----|---------|--------|
| 2016 | 23 | 71 | 18 | 7 | 12 | NA | 0 | 131 |
| 2017 | 11 | 79 | 14 | 4 | 15 | 0 | 2 | 125 |
| 2018 | 23 | 41 | 16 | 3 | 8 | 0 | 2 | 93 |
| 2019 | 16 | 32 | 12 | 5 | 10 | 1 | 0 | 76 |
| 2020 | 25 | 179 | 27 | 16 | 29 | 4 | 1 | 281 |
| TOTALS | 98 | 402 | 18 | 35 | 74 | 5 | 5 | 637 |
| 5 YR AVG | 20 | 78 | 90 | 7 | 15 | 1 | 1 | 138 |

5 Year Average Acres

The following graph illustrates the total number of acres burned within the zone for all agencies. We experienced a 300% increase from the total acres burned from the previous year. Both the total number of fires and acres burned proved to be exceptional years.



Agency Acres Burned

| YEAR | USFS | BLM | NPS | USFWS | CCFD/ASSIST | NDF | DOD/NTE | TOTALS |
|-----------------|--------------|---------------|-----------|------------|-------------|------------|---------------|---------------|
| 2016 | 479 | 74 | 2 | 4 | 6 | NA | 0 | 565 |
| 2017 | 419 | 2312 | 6 | 1 | 27 | NA | 10,008 | 12,773 |
| 2018 | 41 | 147 | 52 | 3 | 57 | 0 | 3242 | 3,542 |
| 2019 | 2 | 4478 | 9 | 1 | 8 | 218 | 0 | 4,716 |
| 2020 | 5608 | 7281 | 5 | 154 | 86 | 1 | 3130 | 16,264 |
| TOTALS | 6,549 | 14,248 | 74 | 163 | 184 | 219 | 16,380 | 37,817 |
| 5 YR AVG | 1875 | 2850 | 15 | 33 | 37 | 44 | 3276 | 8129 |

* Numbers were rounded to the nearest whole number.

Quick Fire Statistics

- 286 - wildfires
- 16,264- acres burned
- 139- False Alarms
- 2,162-resources order filled/created
- 42-days expanded dispatch was staffed
- 65-days Las Vegas Dispatch was at PL3

2020 Fire Statistics

| 2020 NV-LIC AGENCY FIRE STATISTICS | | | | | | | NV-LIC PRESCRIBE FIRE | |
|------------------------------------|------------------|------------------|------------------|-------------|--------------|--------------------|-----------------------|-------------|
| NV-LIC INCIDENTS | | | | | | | BLM | |
| WILDFIRE | MISC | LE | MEDICAL | CDD ASSIST | A/C FF | TOTAL INCIDENTS | RX | ACRES |
| 286 | 1145 | 83 | 43 | 19 | 43 | 1995 | 0 | 0.00 |
| NV-LIC INCIDENTS | | | | | | | FS | |
| PUB ASSIST | | SMOKE CHK | SAR | VEH. FIRE | RX | LAST INC. NUMBER | RX | ACRES |
| 20 | | 19 | 5 | 7 | 2 | 501995 | 0 | 0.00 |
| BLM | | | | | | | FWS | |
| L | L-ACRES | H | H-ACRES | TOTAL FIRES | TOTAL ACRES | FA | RX | ACRES |
| 5 | 8508.10 | 174 | 773.23 | 179 | 7281.33 | 80 | 2 | 170.00 |
| CCFD | | | | | | | LAP | |
| L | L-ACRES | H | H-ACRES | TOTAL FIRES | TOTAL ACRES | FA | RX | ACRES |
| 0 | 0.00 | 13 | 77.78 | 13 | 77.78 | 4 | 0 | 0.00 |
| USFS | | | | | | | NDF | |
| L | L-ACRES | H | H-ACRES | TOTAL FIRES | TOTAL ACRES | FA | RX | ACRES |
| 9 | 2826.40 | 16 | 2781.70 | 25 | 5608.10 | 41 | 0 | 0.00 |
| USFS | | | | | | | TSP | |
| ABAN. CAMPFIRE | ILLEGAL CAMPFIRE | WILDERNESS FIRES | WILDERNESS ACRES | | | | RX | ACRES |
| 38 | 192 | 10 | | | | | 0 | 0.00 |
| FWS | | | | | | | NTE | |
| L | L-ACRES | H | H-ACRES | TOTAL FIRES | TOTAL ACRES | FA | RX | ACRES |
| 0 | 0.00 | 16 | 154.40 | 16 | 154.40 | 0 | 0 | 0.00 |
| NTE | | | | | | | | |
| L | L-ACRES | H | H-ACRES | TOTAL FIRES | TOTAL ACRES | FA | | |
| 1 | 3130.00 | 0 | 0.00 | 1 | 3130.00 | 0 | | |
| LAP | | | | | | | | |
| L | L-ACRES | H | H-ACRES | TOTAL FIRES | TOTAL ACRES | FA | | |
| 0 | 0.00 | 27 | 4.20 | 27 | 4.20 | 10 | | |
| TSP | | | | | | | | |
| L | L-ACRES | H | H-ACRES | TOTAL FIRES | TOTAL ACRES | FA | | |
| 0 | 0.00 | 3 | 0.30 | 3 | 0.30 | 0 | | |
| NDF (INCLUDES AREAS WITH IN WFPP) | | | | | | | | |
| L | L-ACRES | H | H-ACRES | TOTAL FIRES | TOTAL ACRES | FA | | |
| 0 | 0.00 | 4 | 0.55 | 4 | 0.55 | 3 | | |
| NYE CO. | | | | | | | | |
| L | L-ACRES | H | H-ACRES | TOTAL FIRES | TOTAL ACRES | FA | | |
| 0 | 0.00 | 8 | 1.20 | 8 | 1.20 | 1 | | |
| LCL | | | | | | | | |
| L | L-ACRES | H | H-ACRES | TOTAL FIRES | TOTAL ACRES | FA | | |
| 0.00 | 0.00 | 8 | 6.70 | 8 | 6.70 | 0 | | |
| TOTAL STATS | | | | | | | | |
| L FIRES | L ACRES | H FIRES | H ACRES | TOTAL FIRES | TOTAL ACRES | TOTAL FALSE ALARMS | TOTAL BURNS | TOTAL ACRES |
| 15 | 12464.50 | 269 | 3800.06 | 284 | 16264.56 | 139 | 2 | 170.00 |
| L= LIGHTNING FIRES | | | | | LAST UPDATED | | | |
| H= HUMAN FIRES | | | | | 1/4/21 | | | |

Fire Danger Operating Plan Statistics

Desert ERC Days

| Extreme | Very high | High | Moderate | Low |
|---------|-----------|------|----------|-----|
| 33 | 93 | 32 | 19 | 82 |

Mountain ERC Days

| Extreme | Very high | High | Moderate | Low |
|---------|-----------|------|----------|-----|
| 22 | 97 | 32 | 24 | 84 |

Desert Response Levels-Total Days

| High | Moderate | Low |
|------|----------|-----|
| 153 | 19 | 87 |

Mountain Response Levels- Total Days

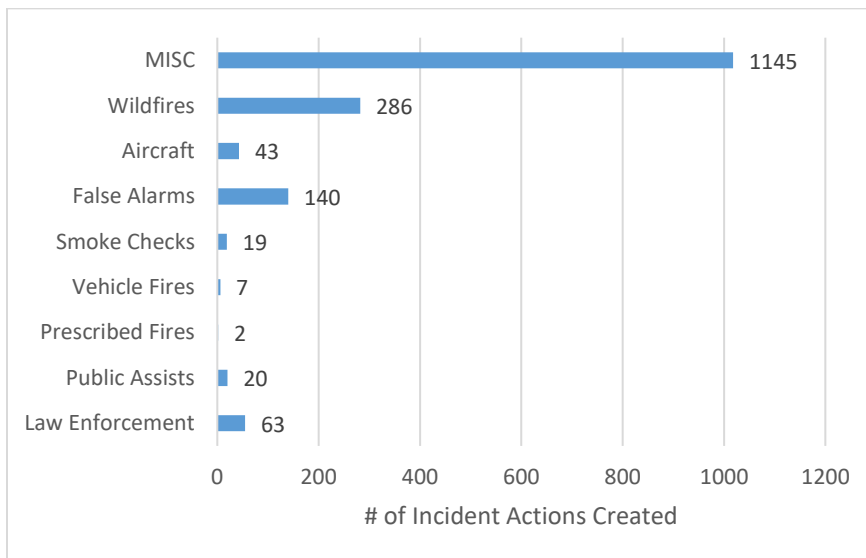
| High | Moderate | Low |
|------|----------|-----|
| 154 | 15 | 90 |

Preparedness Level- Total Days

| PL-1 | PL-2 | PL-3 |
|------|------|------|
| 104 | 51 | 65 |

Incident Actions

Las Vegas Dispatch created 1,993 incident actions to support wildfire responses off unit/locally and in assisting the BLM- California Desert District, prescribed fire support, smoke checks, false alarms, vehicle fires, medical aid, public assist, law enforcement, aircraft flight following and mission, and miscellaneous events.



Resource Order Overview

Las Vegas mobilized equipment, crews, overhead, and aircraft totaling 2,162 resource orders. The following illustrates the breakdown of orders filled in IROC. This graph doesn't reflect the orders filled on unit vs off unit only the total number.

